



# Greater Sage-Grouse 2015 Status Review

# Goals for today:

Understand the process for completing the 2015 greater sage-grouse status review

- Information
- Analysis
- Timing



# Status Review

## Guiding Principles:

- Transparent process
- Best Available Science
- Provide a clear rationale for decision making
- Maximize Legal Defensibility
- Effectively communicate with Federal, State and Tribal partners



# Moving Forward

## Foundational Elements:

- Previous Work
  - 2010 Finding
  - Conservation Objective Team (COT) Report
- Evaluate Information
  - Current Status/Trends
  - Understanding of potential effects (positive and negative) and species response



# Decision Analysis

- Current Status and Trends
- New Scientific Information
- Assessing Threats
  - Focus on major threats
  - By appropriate scale (PAC, Population, Range)
  - Models and Expert Elicitation
- Assessing Conservation Actions
  - Conservation Efforts Database
  - Qualitative Assessment
- Bringing these pieces together in a status determination

# Information - Land Manager Input

## Conservation Efforts Database (CED)

We need your immediate assistance...

- Identify 'Approving Officials'
  - Act as Points of Contact between the CED Team and your agency
- Necessary step for partners to begin data entry/upload



# Modeling Workshop Outcomes

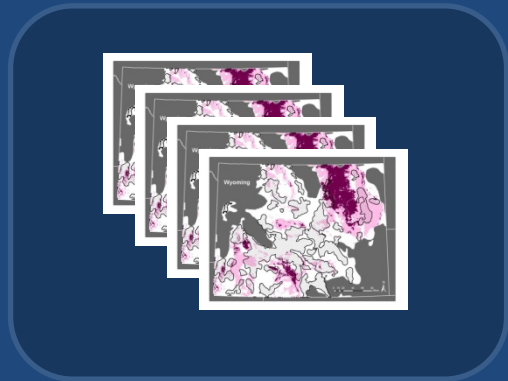
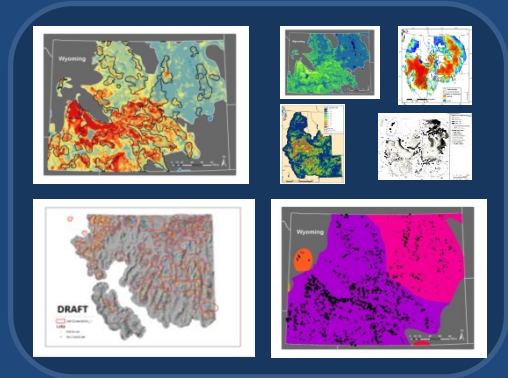
## Moving Forward:

- Independent analyses using multiple methods will be completed
- Collaborate amongst modelling efforts on threat data and analysis
- Service will work with modelling efforts to develop reasonable predictive scenarios



# Modeling:

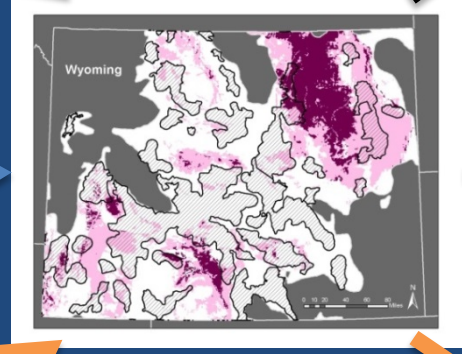
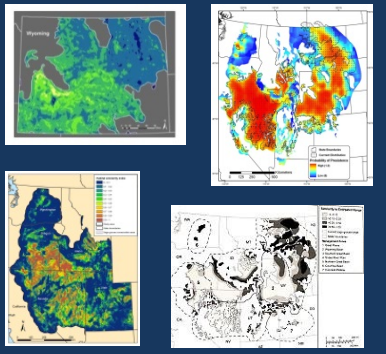
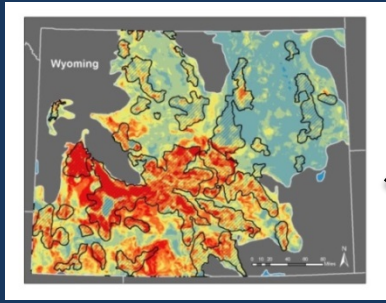
- 7 population models
  - abundance
  - distribution
  - trends
- 4 threat models
  - oil & gas
  - fire & invasives
  - cropland risk
  - conifer
- Projects and analyses remain independent





Integrate through  
spatial overlap  
with 4 Risk Models

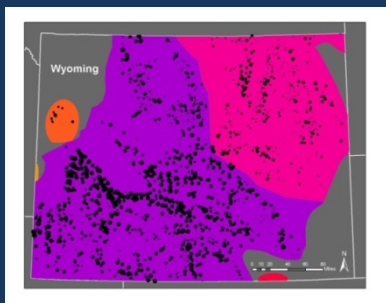
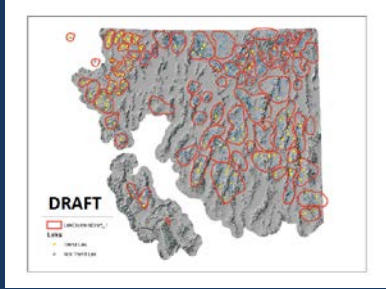
Projected Relative  
Abundance



Projected Distribution

Projected Population  
Trends

Current Population  
Trend recent period



# Evaluation of conservation efforts

## Conservation Efforts Database (CED)

- Used to collect and review on-the-ground efforts
- Spatially map planning efforts
- Incorporated into species report and threats analysis

## Application of the Policy of Evaluation of Conservation Efforts (PECE)

- Certainty of implementation
- Certainty of effectiveness



# Timing

Oct.

- **Initial Collection:** We request initial data call responses by October 31, 2014

Nov.

- **Conservation Efforts Database Closes:** Spatial data and narratives related to conservation will be captured in the database until December 2014.

Dec.

Jan.

- **Review and Analysis of Information:** We will review literature, submitted information, and existing models.

Feb.

Spring  
2015

- **Information Synthesis**

Sept.  
2015

- **Determination Due:** September 30, 2015

# Questions



All the presentations shared today along with other sage-grouse information can be found on our national, greater sage-grouse website.

*<http://www.fws.gov/greatersagegrouse/>*

